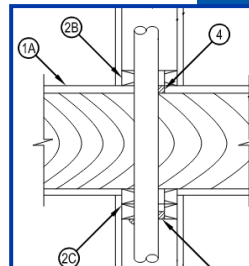
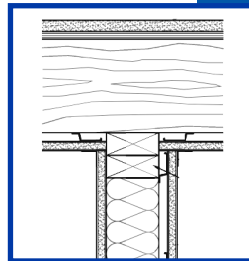


## Fire Partitions vs Fire Barriers

### Critical Differences in Type V-A

Horizontal floor-ceiling assemblies are critical for fire safety and structural integrity in all Type V-A construction and some Type II-A construction. However, horizontal assemblies and the walls supporting them are one of the most misunderstood and incorrectly designed components in fire-resistive construction. Using designs from real projects, this class will weave together the code requirements so AHJs can prevent the common errors in design before construction takes place.

- Why is horizontal continuity important?
- What code sections deal with this?
- Doesn't the wall protect vertical penetrations?
- What is a "smoke seal" Engineering Judgment?
- What is an L500 floor/ceiling assembly?
- What about interior partitions with metal studs?
- What about chases versus shafts?
- What about draftstopping & fireblocking?



#### What Others Say

*"This has been one of the most informative seminars that I have attended. You guys are great! The follow up information is very useful."*

Building Inspector — CA

#### Presenter: Wayne Barrow

In his sixteen years experience in firestopping, Wayne has conducted firestop inspection and quality control on more than 240 projects totaling over \$15 billion of new and 18 million square feet of existing construction.

He has authored three books on firestop quality control and inspection, and trained over 8000 building officials, architects, contractors and facilities personnel in the US and the Caribbean.

After years working in firestop products and as a firestop installation contractor, he founded VeriCon, an independent inspection, consulting and training firm in 2010 and continues to inspect throughout New England.

**VeriCon**

(603) 769-4108



[MBOIA Registration link](#)

Click [here](#) to download the sample architectural details to be used in the class

## **Section 711 Floor and Roof Assemblies**

### **711.1 General**

*Horizontal assemblies* shall comply with Section 711.2. Non-fire-resistance-rated floor and roof assemblies shall comply with Section 711.3.

### **711.2 Horizontal Assemblies**

*Horizontal assemblies* shall comply with Sections 711.2.1 through 711.2.6.

#### **711.2.1 Materials**

Assemblies shall be of materials permitted by the building type of construction.

#### **711.2.2 Continuity**

Assemblies shall be continuous without vertical openings, except as permitted by this section and Section 712.

**HORIZONTAL ASSEMBLY.** A fire-resistance-rated floor or *roof assembly* of materials designed to restrict the spread of fire in which continuity is maintained.

## **§708 – Fire Partitions**

### **708.4 Continuity**

*Fire partitions* shall extend from the top of the foundation or floor/ceiling assembly below to the underside of the floor or roof sheathing, slab or deck above or to the fire-resistance-rated floor/ceiling or roof/ceiling assembly above and shall be securely attached thereto. In combustible construction where the *fire partitions* are not required to be continuous to the sheathing, deck or slab, the space between the ceiling and the sheathing, deck or slab above shall be fireblocked or draftstopped in accordance with Sections 718.2 and 718.3 at the partition line. The supporting construction shall be protected to afford the required *fire-resistance rating* of the wall supported, except for walls separating tenant spaces in covered and *open mall buildings*, walls separating *dwelling units*, walls separating *sleeping units* and *corridor walls*, in buildings of Type IIB, IIIB and VB construction.

### **718.2.2 Concealed Wall Spaces**

*Fireblocking* shall be provided in concealed spaces of stud walls and partitions, including furred spaces, and parallel rows of studs or staggered studs, as follows:

1. Vertically at the ceiling and floor levels.
2. Horizontally at intervals not exceeding 10 feet (3048 mm).

## **Section 420 Groups I-1, R-1, R-2, R-3 and R-4 – 2015 MUBC**

### **420.1 General**

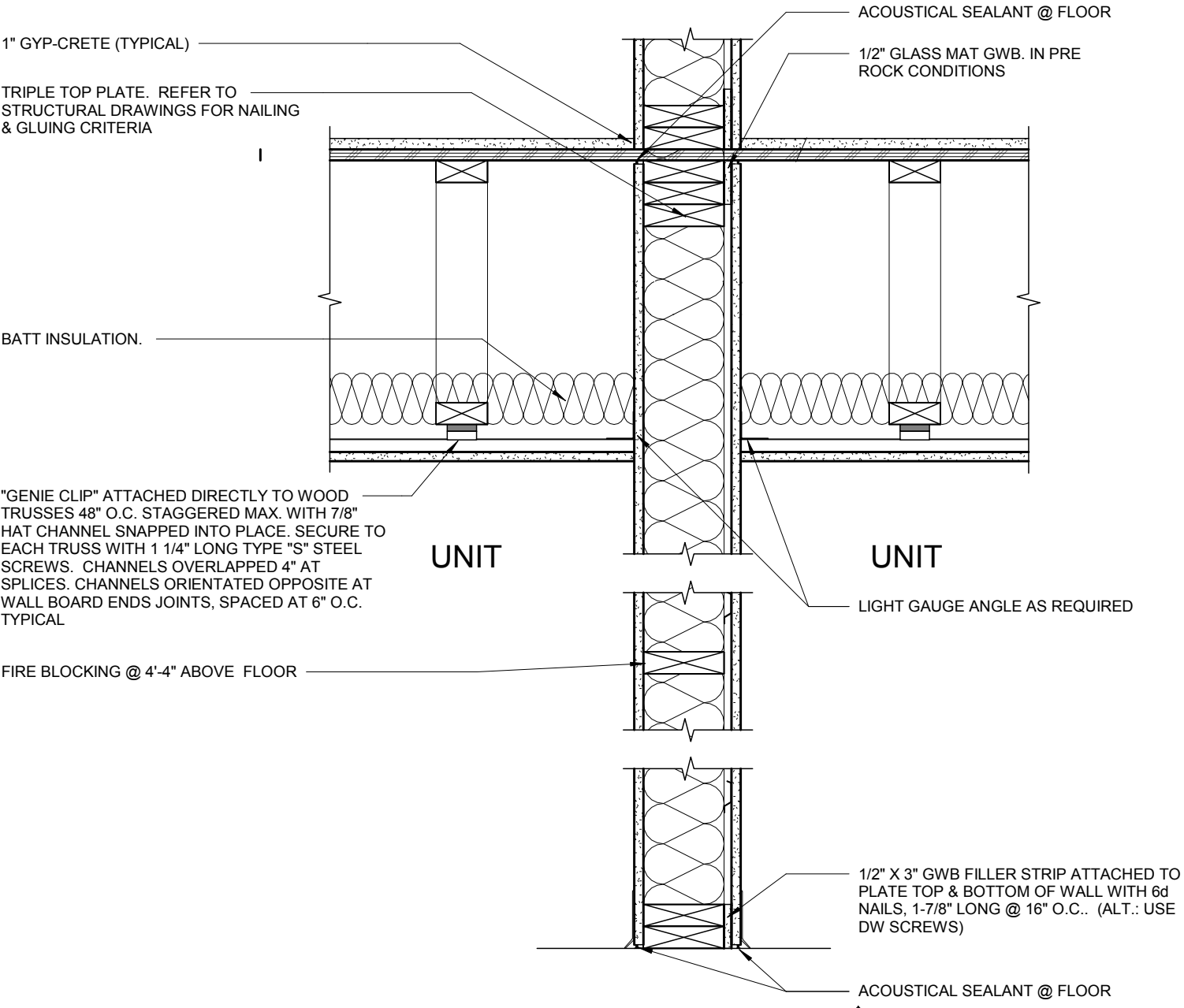
Occupancies in Groups I-1, R-1, R-2, R-3 and R-4 shall comply with the provisions of Sections 420.1 through 420.6 and other applicable provisions of this code.

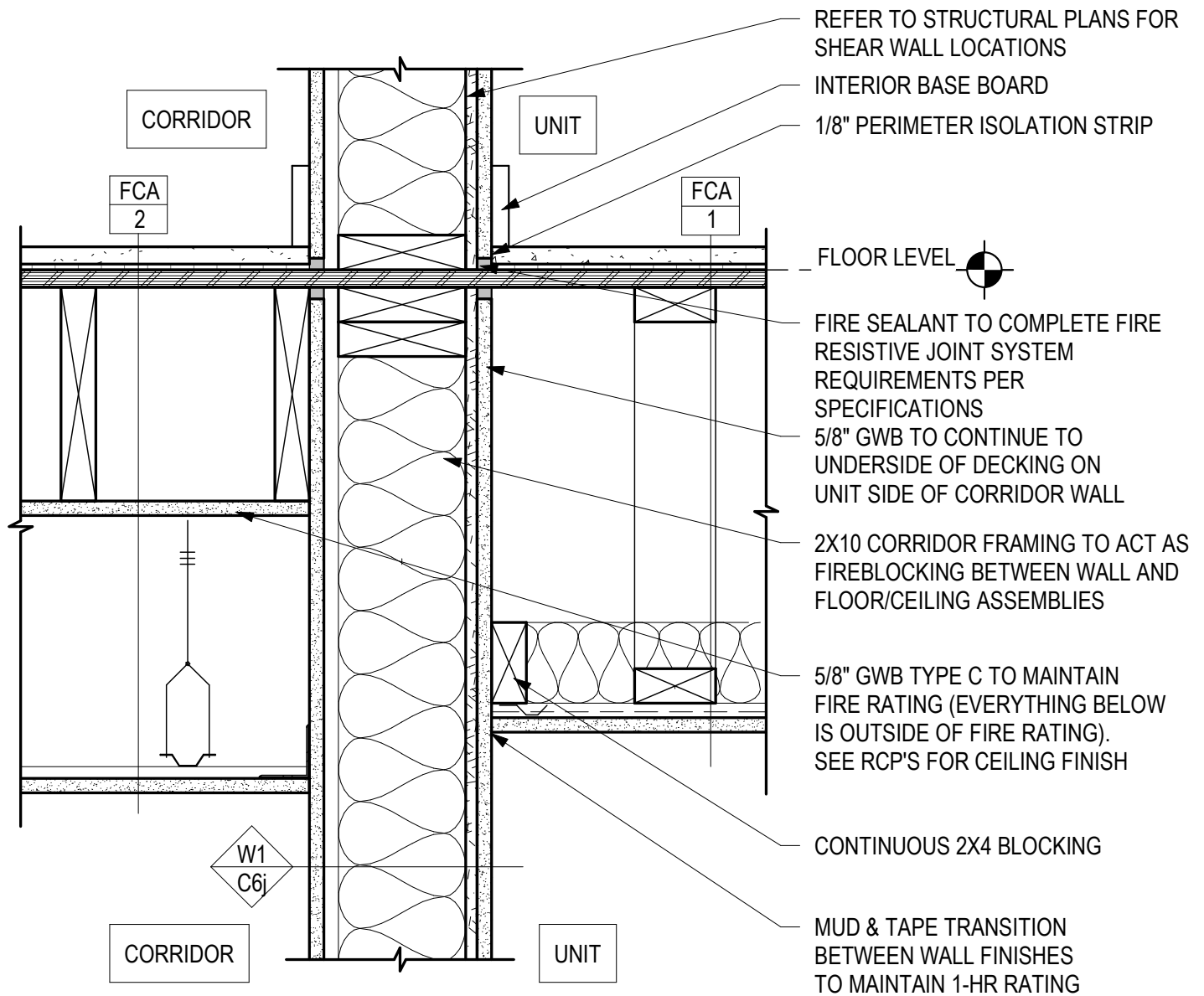
### **420.2 Separation Walls**

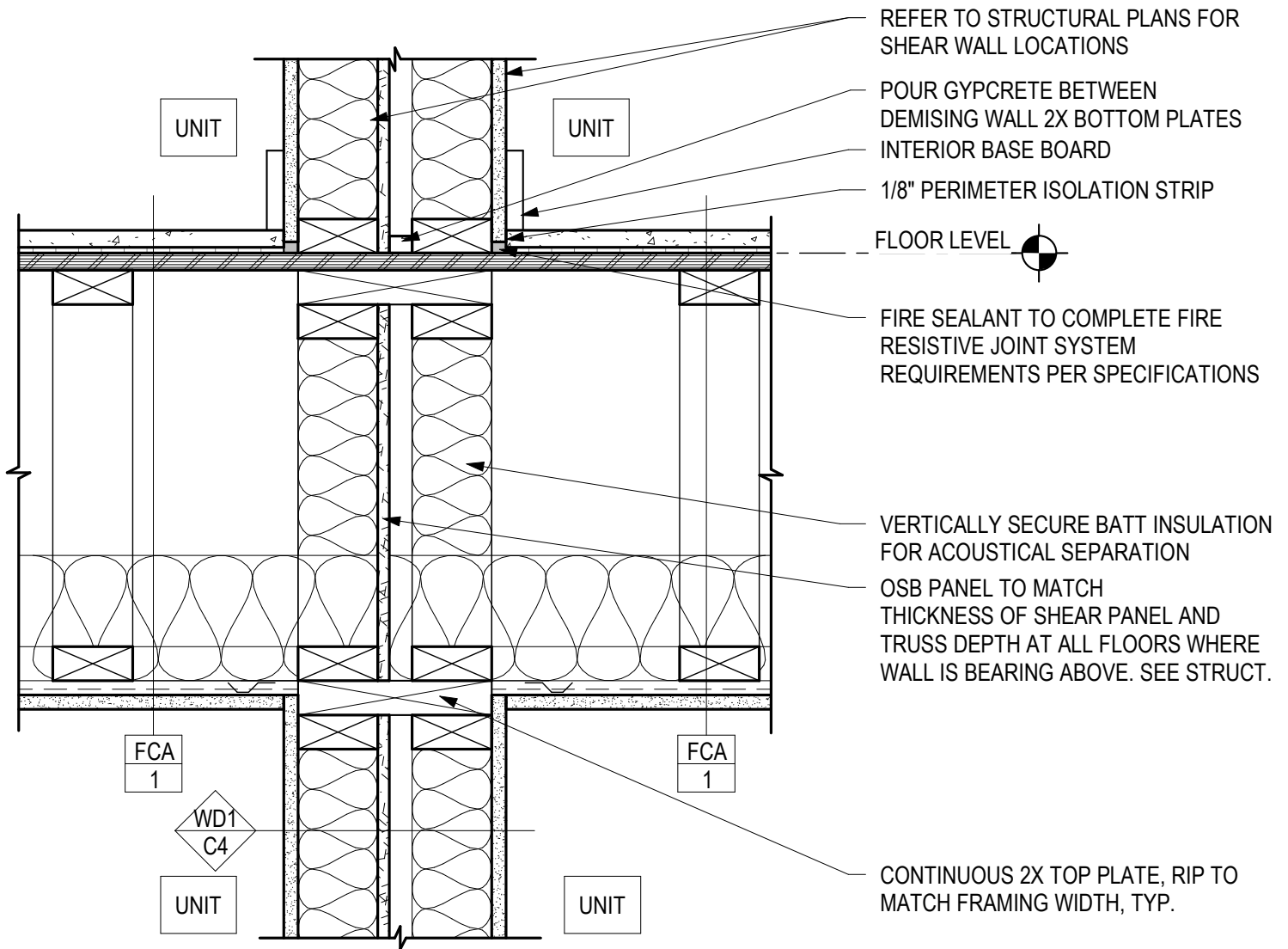
Walls separating *dwelling units* in the same building, walls separating *sleeping units* in the same building and walls separating *dwelling* or *sleeping units* from other occupancies contiguous to them in the same building shall be constructed as *fire partitions* in accordance with Section 708.

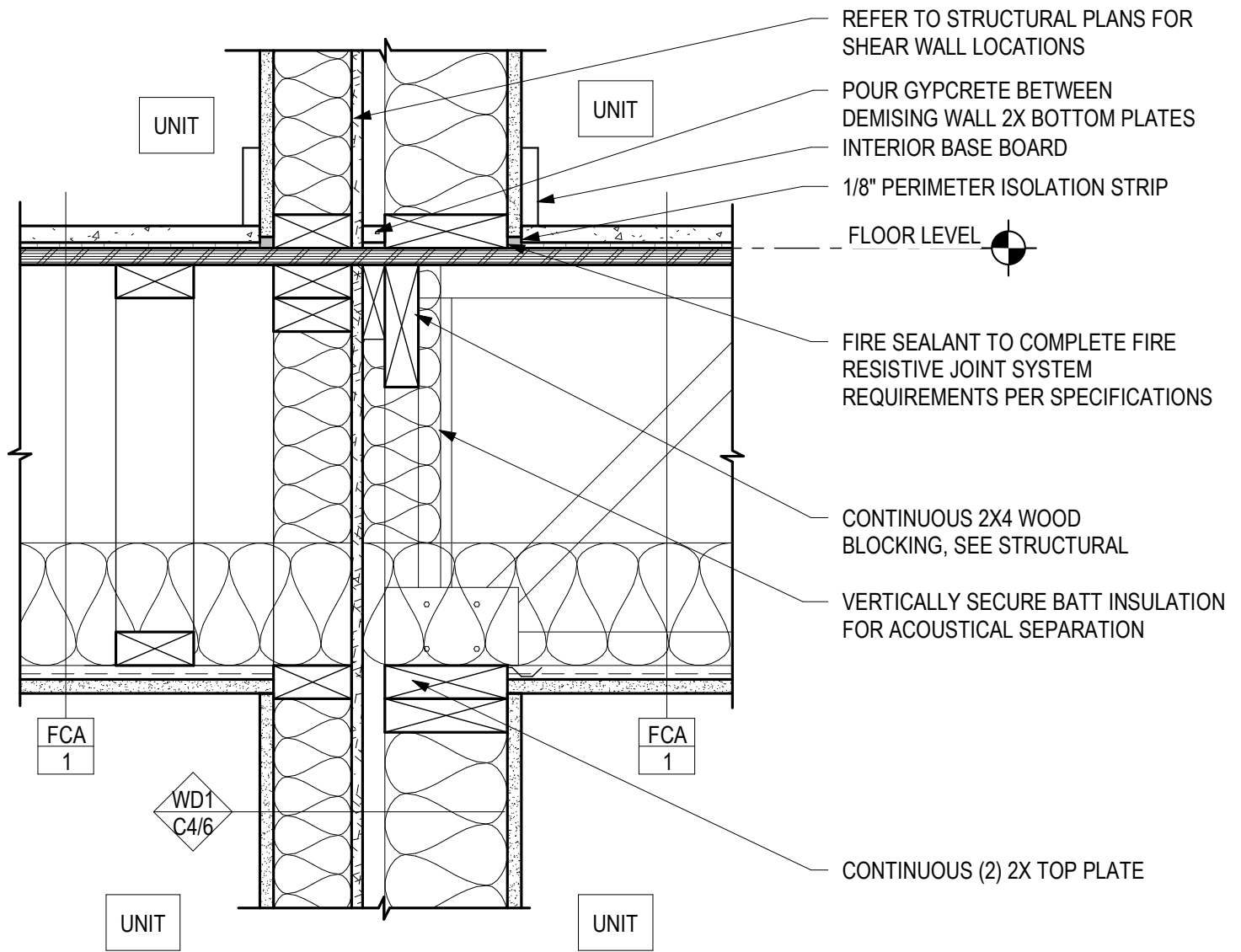
### **420.3 Horizontal Separation**

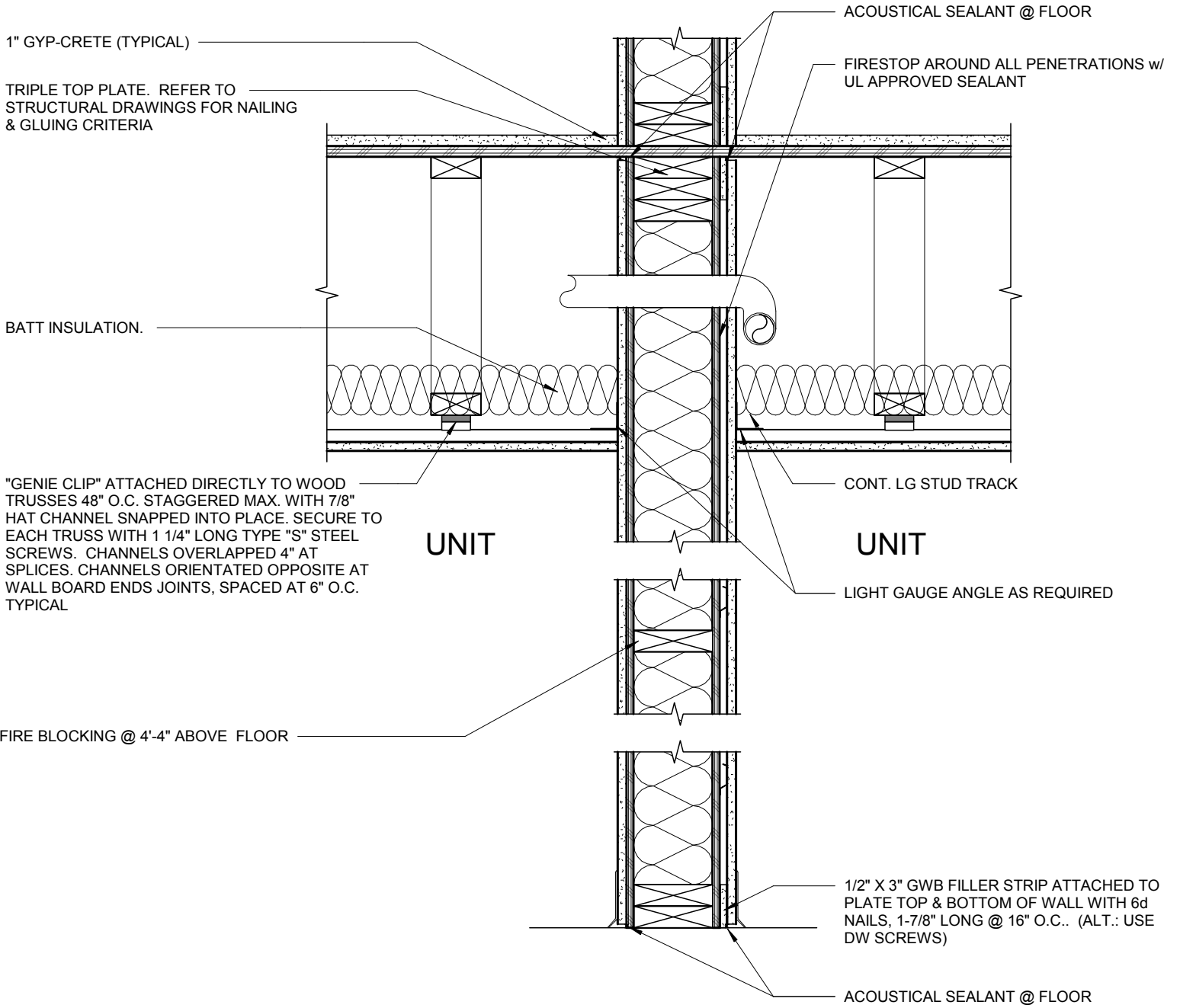
Floor assemblies separating *dwelling units* in the same buildings, floor assemblies separating *sleeping units* in the same building and floor assemblies separating *dwelling* or *sleeping units* from other occupancies contiguous to them in the same building shall be constructed as *horizontal assemblies* in accordance with Section 711.

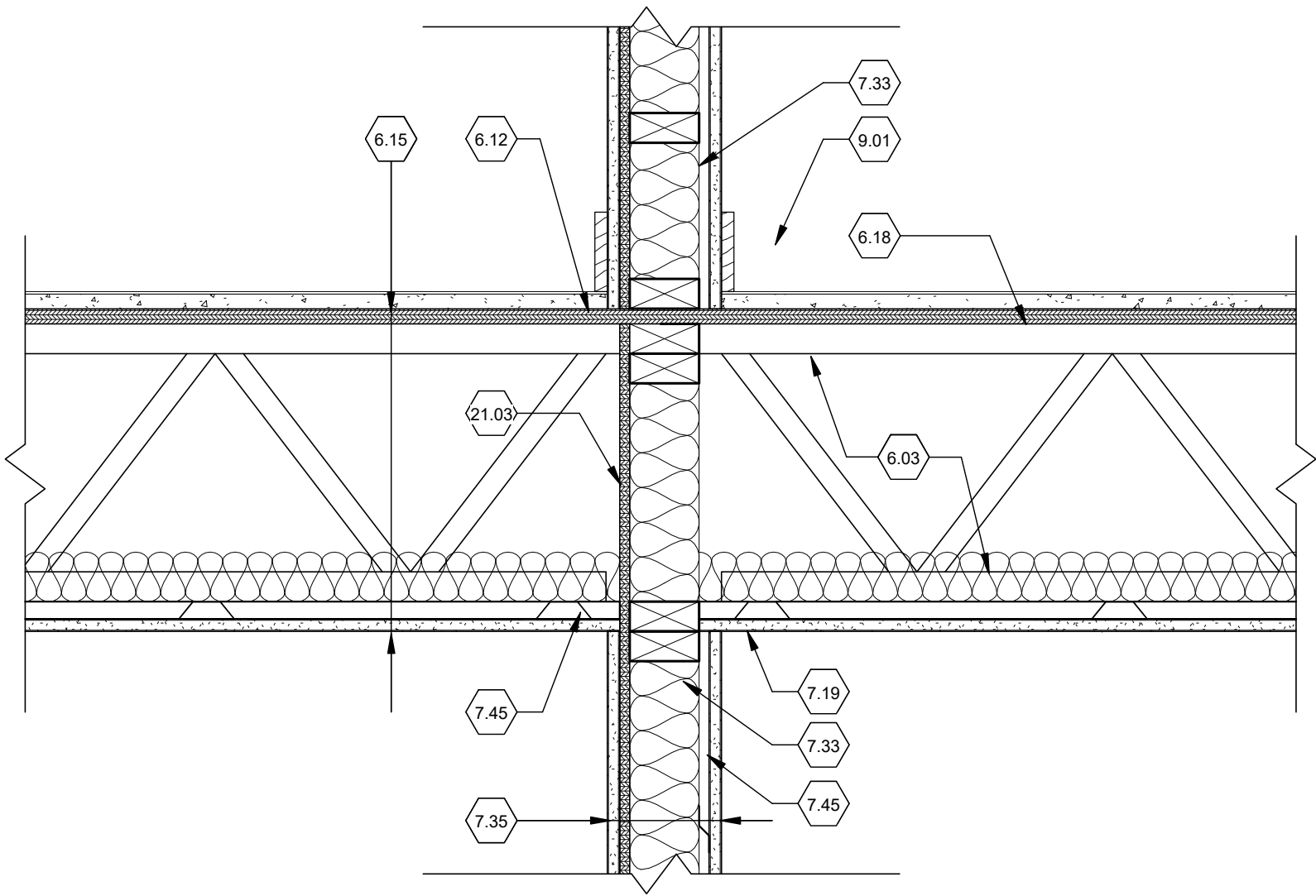




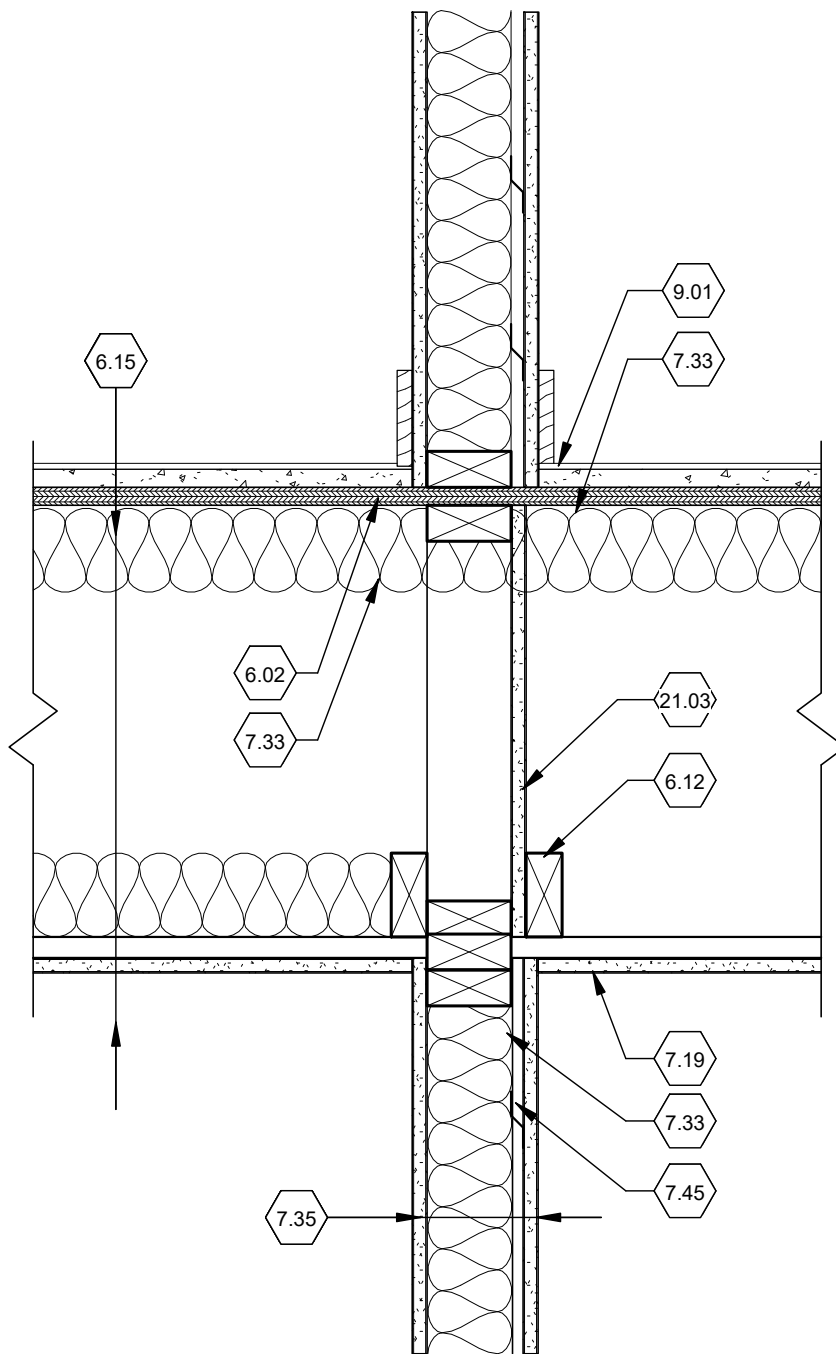












1  
A901

# DRAFTSTOPPING CORRIDOR DETAIL

1 1/2" = 1'-0"